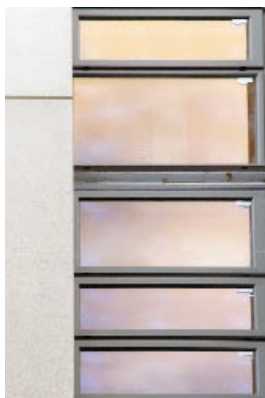




MIGLAS WINDOWS

a clear environmental vision



MIGLAS WINDOWS WAS ESTABLISHED IN THE EARLY 1970'S BY WALLY MIGLAS as a family joinery business. The business evolved and developed and was continued on by his son Anatol Miglas.

Located in new premises in Montrose Victoria since 1985, Miglas specialises in window design and manufacture. The company boasts the latest, state-of-the-art machinery, guarantee a consistent product and continue to develop innovative, sustainable designs.

"All the products are designed in-house and we are continually improving the design and construction methods. The result is a product that we believe outperforms anything in the market under NATA approved laboratory tests. Recent tests on our Ali Clad window exceeded 200 pa of water pressure" said Mr. Miglas.

As well as producing high quality products, environmental sustainability is an important part of the company philosophy.

Miglas manufactured and supplied the specialised windows for the CH2 project. Mr. Miglas said that no other window manufactures could meet the stringent requirements for timber windows in the 10 storey environmental, sustainable development.

One of these requirements was that the timber was sourced from re-growth forests.

"All timber, for every project, is sourced from sustainable re-growth forests. The native timber is private or state forests approved by the Victorian Department of Natural Resources and Environment for selective logging of re-growth timber." said Mr. Miglas.

Miglas are continually developing their products with the environment in mind. Recently the company was selected to manufacture and supply windows to two sustainable housing developments – K2 in Windsor, Melbourne and Walford Terraces in Hobart.

For more information, please telephone MIGLAS WINDOWS on (03) 9728 3999